

Ageratina altissima
white snakeroot

Height: 2 to 4'

Blooms: Sept. to October; white

Light: part sun to full shade

Soil: dry to moist; loam, clay

Note: seeds well





Allium cernuum
nodding onion

Height: 1 to 2'

Blooms: May to July; pink/lilac

Light: full sun to part shade

Soil: dry to moist; sand, loam

Note: rocky slopes, drought and black walnut tolerant





Anemone canadensis
Canadian anemone



Height: 1'

Blooms: April to June; white

Light: full sun to full shade

Soil: moist; clay, loam





Antennaria neglecta field pussytoes

Height: 3 to 6"

Blooms: April and May; white

Light: full sun to part shade

Soil: dry to moist; well-drained loam

Host to: American painted lady

Note: evergreen, erosion control





Antennaria parlinii
Parlin's pussytoes

Height: 3 to 6"

Blooms: April and May; white

Light: full sun to part shade

Soil: dry to moist; well-drained loam

Host to: American painted lady

Note: evergreen, erosion control





Antennaria plantaginifolia
plantainleaf pussytoes

Height: 3 to 6"

Blooms: April to May; white

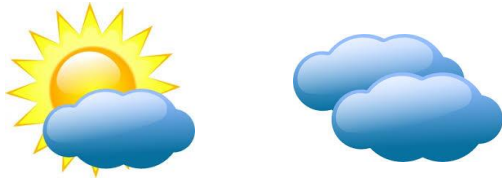
Light: full sun to part shade

Soil: dry to moist; well-drained loam

Host to: American painted lady

Note: evergreen, erosion control





Aquilegia canadensis red columbine

Height: 1.5 to 3'

Blooms: April to June; red/yellow

Light: part sun to full shade

Soil: dry to moist; clay, loam

Note: attracts hummingbirds





Arisaema dracontium green dragon



Height: 1 to 1.5'

Blooms: April to June; green

Light: full to part shade

Soil: moist to wet; clay, loam

Note: red berries in fall, showy





Arisaema triphyllum
Jack in the pulpit

Height: 1 to 2'

Blooms: May to July; green/purple

Light: part sun to full shade

Soil: moist to wet; clay, loam

Note: red berries in fall





Asclepias incanata swamp milkweed



Height: 2 to 4'

Blooms: May to August; pink

Light: full sun to part shade

Soil: wet; silty loam

Host to: monarch

Note: deep taproot, raingardens





Asclepias purpureascens
purple milkweed



Height: 2 to 4'

Blooms: May to August; purple

Light: full sun to part shade

Soil: dry; clayey loam

Host to: monarch

Note: deep taproot





Asclepias syriaca common milkweed

Height: 3 to 6'

Blooms: May to August; pink to purple

Light: full sun to part shade

Soil: dry; loam, clay

Host to: monarch

Note: spreads by rhizome





Asclepias tuberosa butterfly milkweed

Height: 1.5 to 2'

Blooms: June to September; orange

Light: full sun

Soil: dry to moist; sand, loam, clay

Host to: monarch

Notes: deep taproot, showy





Calycanthus floridus
Eastern sweetshrub

Height: 6 to 10'

Blooms: April to July; reddish-brown

Light: full sun to part shade

Soil: moist; clay

Note: deciduous shrub; fragrant bark





Carex glaucoidea
Blue sedge

Height: 0.3 to 0.8'

Blooms: April and May

Light: part sun to full shade

Soil: moist to wet; silty

Host to: skipper

Note: evergreen





Cerastium arvense field chickweed

Height: 0.2 to 0.8'

Blooms: March to June; white

Light: full sun to part shade

Soil: moist; loam

**Notes: not like invasive chickweed,
groundcover, dies back in summer**





Chasmanthium latifolium

Indian woodoats

Height: 2 to 3.5'

Blooms: July to August; green

Light: full sun to full shade

Soil: dry to moist; sandy-loam

Host to: skippers

Note: tan in fall





Chasmanthium latifolium

Indian woodoats

Height: 2 to 3.5'

Blooms: July to August; green

Light: full sun to full shade

Soil: dry to moist; sandy-loam

Host to: skippers

Note: tan in fall





Chelone glabra
white turtlehead

Height: 2 to 6'

Blooms: July to October; white

Light: full sun to full shade

Soil: moist to wet; sandy-loam

Host to: Baltimore checkerspot





Chrysopsis mariana
Maryland goldenaster

Height: 1.5 to 2'

Blooms: September and October; yellow

Light: full sun to part shade

Soil: moist; sandy, well-drained

Note: groundcover





Claytonia virginica
Virginia spring beauty

Height: 0.2 to 0.4'

Blooms: March to May; white/pink

Light: full shade

Soil: moist; loamy rich humus

Note: an ephemeral annual





Conoclinium coelestinum blue mistflower

Height: 1.5 to 2.5'

Blooms: August to October; lilac

Light: full sun to full shade

Soil: moist to wet; loam, clay

Note: aggressive seeder





Coreopsis verticillata whorled tickseed

Height: 2 to 3.5'

Blooms: June to August; yellow

Light: full sun to part shade

Soil: dry; loam

**Notes: slowly spreading; trim
when young; goldfinches**





Cornus racemosa
gray dogwood

Height: 6 to 12'

Blooms: May and June; white

Light: full sun to full shade

Soil: dry to moist; loam, clay

Host to: Spring azure

Note: fruit white berry, fall color purple





Elymus glabriflorus

Southeastern wildrye

Height: 2 to 4'

Blooms: June and July; green

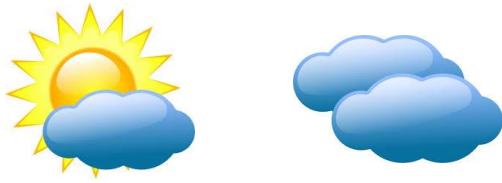
Light: full sun to part shade

Soil: moist; loam

Host to: skippers

Note: cool season grass





Elymus hystrix
**Eastern
bottlebrush grass**

Height: 3 to 4'

Blooms: June and July; green

Light: part sun to full shade

Soil: moist; loam

Host to: wood nymph

Note: not on Delmarva Peninsula





Elymus virginicus
Virginia wildrye

Height: 2 to 3'

Blooms: June and July; green

Light: full sun to part shade

Soil: dry; loam

Host to: skippers

Note: not on Delmarva Peninsula





Elymus riparius
wildrye

Height: 2 to 3'

Blooms: June and July; green

Light: full sun to part shade

Soil: dry; loam

Host to: skippers

Note:





Eragrostis spectabilis
purple lovegrass

Height: 1 to 2'

Blooms: August to October; purple

Light: full sun

Soil: dry; sand, loam, clay

Host: skippers





Eragrostis spectabilis
purple lovegrass

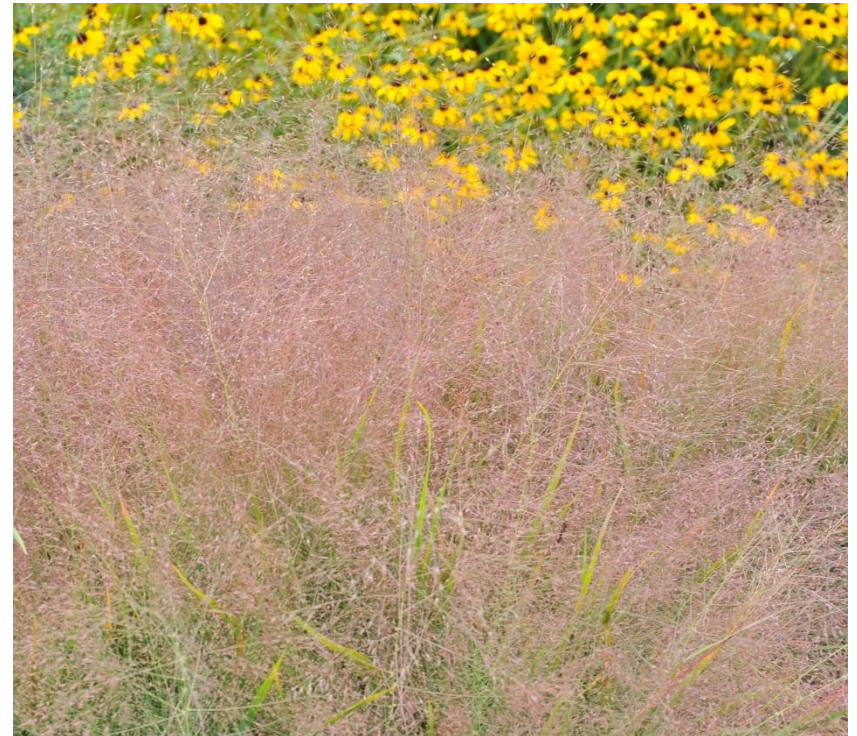
Height: 1 to 2'

Blooms: August to October; purple

Light: full sun

Soil: dry; sand, loam, clay

Host: skippers





Eupatorium hyssopifolium
**hyssopleaf
thoroughwort**

Height: 3 to 4'

Blooms: August to October; white

Light: full sun to part shade

Soil: dry to moist; loamy-clay

Note: pollinator magnet





Eutrochium dubium
**coastal plain
joepyeweed**

Height: 3 to 4'

Blooms: August and September; pink

Light: full sun to part shade

Soil: moist; loam

Note: was *Eupatorium dubium*





Eutrochium fistulosum
hollow-stem
joepyeweed

Height: 4 to 7'

Blooms: July to October; pink

Light: full sun to part shade

Soil: moist to wet; loam or clay

Note: raingarden





Eurybia divaricata
white wood aster

Height: 1.5 to 3'

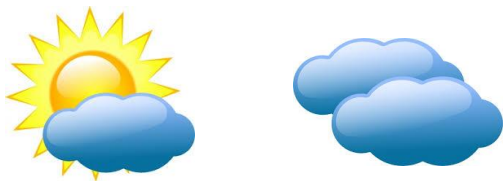
Blooms: August to November; white

Light: part sun to full shade

Soil: dry to moist; sandy-loam

Note: blooms well in full shade





Ionactis linariifolius
flaxleaf whitetop aster

Height: 6" to 1.5'

Blooms: August to November; blue

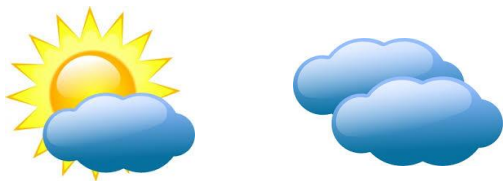
Light: full sun to part shade

Soil: dry to moist; sandy-loam

Host: Pearl Crescent larvae

Notes: prefers rocky sandy sites





Fragaria virginiana
Virginia strawberry

Height: 0.2 to 0.5'

Blooms: May and June; white/yellow

Light: part sun to full shade

Soil: dry to moist; loam

Note: spreads by long stolons





Gentiana clausa bottle gentian

Height: 1 to 2'

Blooms: August to October; blue

Light: full sun to part shade

Soil: dry to moist; sandy

**Note: may be the same species as
*G. andrewsii***





Helenium flexuosum
**purplehead
sneezeweed**

Height: 1.5 to 3.5'

Blooms: May to July; yellow

Light: full sun to part shade

Soil: dry to moist; sand, loam

Note: overwinters as a rosette





Helianthus divaricatus woodland sunflower

Height: 2 to 6'

Blooms: July to September; yellow

Light: full sun to part shade

Soil: dry to moist; loam

Notes: spreads by rhizome, trim to keep compact





Heliopsis helianthoides smooth oxeye

Height: 3 to 5'

Blooms: June to August; yellow

Light: full sun to part shade

Soil: dry to moist; loam

Notes: also called false sunflower





Hibiscus moscheutos
swamp rosemallow

Height: 3 to 6'

Blooms: July to Sept; pink/white

Light: full sun to part shade

Soil: moist to wet; silty to sandy

Note: raingardens





Iris versicolor
harlequin blueflag

Height: 2 to 3'

Blooms: May to August; blue/white

Light: full sun to part shade

Soil: moist to wet; loamy-sand

Note: raingarden; hummingbirds





Lespedeza violacea
violet lespedeza

Height: 1.5 to 3'

Blooms: July to Sept; pink/purple

Light: full sun to part shade

Soil: dry; sandy

Host to: Long-tailed blue

Note:





Liatris spicata
dense blazingstar

Height: 2 to 4'

Blooms: August and September; purple

Light: full sun to part shade

Soil: dry to moist; sandy-loam, clay

Note: vertical structure in the garden





Liatris spicata
dense blazingstar

Height: 2 to 4'

Blooms: August and September; purple

Light: full sun to part shade

Soil: dry to moist; sandy-loam, clay

Note: vertical structure in the garden





Lobelia cardinalis cardinal flower

Height: 2 to 4'

Blooms: July to September; red

Light: full sun to part shade

Soil: moist to wet; loam

Note: attracts hummingbirds





Lobelia puberula
downy lobelia



Height: 2 to 3'

Blooms: July to September; lilac

Light: full sun to part shade

Soil: moist to wet; loam

Note: attracts hummingbirds





Lobelia siphilitica
great blue lobelia

Height: 3 to 4'

Blooms: August and September; blue

Light: full sun to part shade

Soil: moist to wet; sandy-loam

Note: attracts hummingbirds





Lonicera sempervirens
trumpet honeysuckle

Height: climber to 15'

Blooms: June to October; pink/yellow

Light: full sun to part shade

Soil: dry; sandy-loam

Notes: attracts hummingbirds; red berries; evergreen





Mertensia virginica
Virginia bluebells

Height: 1.5 to 2.5'

Blooms: April and May; blue

Light: part sun to full shade

Soil: dry to moist; sandy-loam

**Notes: spreads by rhizome; slow
growing from seed**





Monarda punctata spotted beebalm

Height: 0.5 to 3.5'

Blooms: June to Sept; purple/yellow

Light: full sun to part shade

Soil: dry; loam, sandy loam

Note: aromatic herb





Oenothera fruticosa
**narrowleaf evening
primrose**

Height: 1.5 to 2'

Blooms: May to July; yellow

Light: full sun to part shade

Soil: dry to moist; sandy

Note: flowers fade in a day





Packera aurea
goldern ragwort

Height: 1 to 2'

Blooms: March to August; yellow

Light: full sun to full shade

Soil: moist to wet; loam

Notes: good groundcover





Panicum virgatum switchgrass

Height: 3 to 5'

Blooms: August and Sept; purple

Light: full sun to part shade

Soil: dry to wet; sandy-loam

Host to: skippers

Note: erosion control, raingarden





Penstemon canescens

Eastern gray beardtongue

Height: 2.5 to 3'

Blooms: May and June; lilac

Light: full sun to part shade

Soil: dry; loam

Note: red fall foliage





Penstemon digitalis
foxglove beardtongue

Height: 2.5 to 4'

Blooms: May and June; white

Light: full sun to part shade

Soil: dry; loam

Note: red fall foliage





Penstemon hirsutus
hairy beardtongue

Height: 2 to 2.5'

Blooms: April and May; lilac

Light: full sun to part shade

Soil: dry; loam

Host for: checkerspot





Physostegia virginiana obedient plant

Height: 3 to 4'

Blooms: August to October; lilac

Light: full sun to part shade

Soil: dry; loam

Notes:





Pseudognaphalium
obtusifolium
rabbit-tobacco

Height: 1.5 to 2.5'

Blooms: August to November; white

Light: full sun to part shade

Soil: dry; loam

Host to: American painted lady

Note: overwinters as a rosette





Pycnathemum muticum
**clustered
mountainmint**

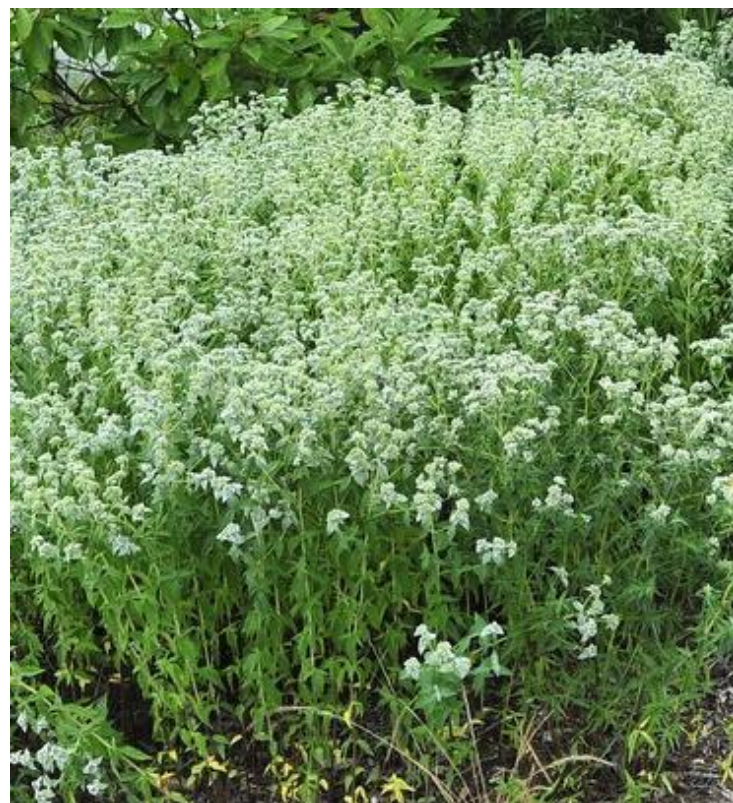
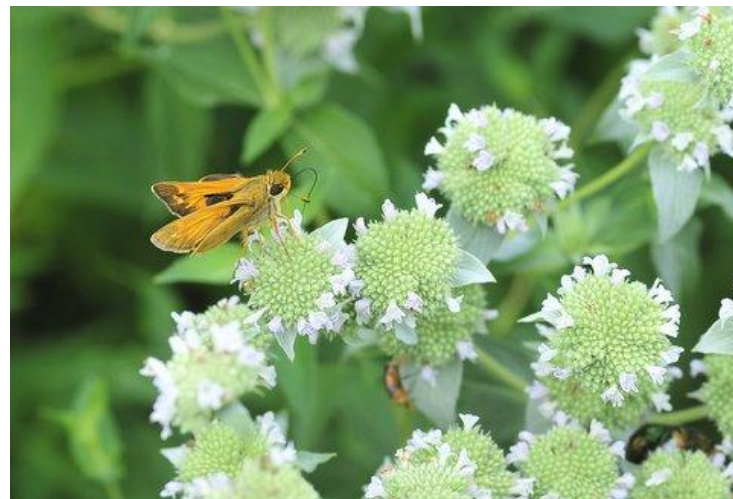
Height: 1.5 to 3'

Blooms: July to September; white

Light: full sun to part shade

Soil: dry to moist; loam, clay

Note: spreads; erosion control





Pycnanthemum tenuifolium
**narrowleaf
mountainmint**

Height: 2 to 3'

Blooms: June to September; white

Light: full sun to part shade

Soil: dry to moist; sandy

Notes: spreads slowly





Rosa carolina
Carolina rose

Height: 1.5 to 3'

Blooms: May and June; pink

Light: full sun to part shade

Soil: dry; loamy-clay

Note: spreads by rhizomes





Rudbeckia fulgida
orange coneflower

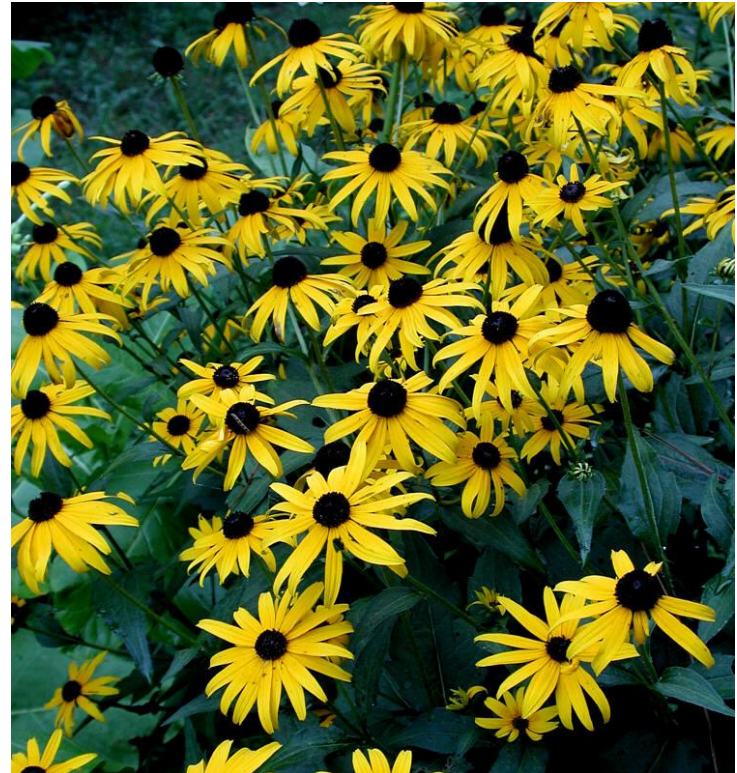
Height: 2 to 3'

Blooms: August to Nov; yellow

Light: full sun to part shade

Soil: dry to moist; sandy

Note: hardier than blackeyed Susan





Rudbeckia hirta
blackeyed Susan

Height: 2 to 3'

Blooms: June to August; yellow

Light: full sun to part shade

Soil: dry to moist; sandy

Note: 2 to 3 year perennial





Rudbeckia triloba
browneyed Susan

Height: 2 to 3'

Blooms: June to October; yellow

Light: full sun to part shade

Soil: dry to moist; sand; loam

Note: hardy; biennial





Saccharum brevibarbe

shortbeard

plumegrass

Height: 6 to 10'

Blooms: August to October; brown

Light: full sun

Soil: moist; sandy-loam

Note: alternative to *Miscanthus*





Salvia lyrata lyreleaf sage

Height: 1 to 1.5'

Blooms: May and June; lilac

Light: full sun to part shade

Soil: dry to moist; sandy

**Notes: seeds prolifically; substitute
for *Ajuga*; overwinters as a rosette**





Sambucus canadensis
**American black
elderberry**

Height: 5 to 10'

Blooms: June and July; white

Light: full sun to part shade

Soil: dry to moist; sandy

**Notes: suckering shrub, edible fruit;
shrub**





Schizachyrium scoparium
little bluestem

Height: 2 to 4'

Blooms: September and October

Light: full sun

Soil: dry; sandy-loam

Host to: skippers





Sedum ternatum
woodland stonecrop

Height: 2 to 4'

Blooms: March and April; white

Light: full shade

Soil: dry to moist; loam

Note: evergreen





Silphium perfoliatum cup plant

Height: 4 to 6'

Blooms: July to September; yellow

Light: full sun to part shade

Soil: moist; loam

Note: goldfinches love the seeds





Sisyrinchium angustifolium
narrowleaf
blue-eyed grass

Height: 0.5 to 1'

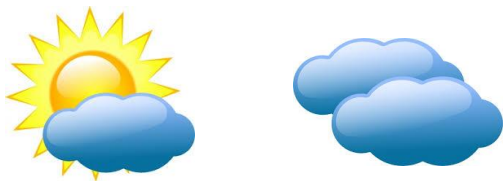
Blooms: May and June; blue

Light: full sun to part shade

Soil: moist; sandy

**Note: dies back in summer and
looks ragged**





Solidago caesia
wreath goldenrod

Height: 1 to 3.5'

Blooms: August to October; yellow

Light: part sun to full shade

Soil: dry to moist; loam

Note: spreads well by seed





Solidago flexicaulis
zigzag goldenrod

Height: 2 to 3'

Blooms: Sept and October; yellow

Light: part shade

Soil: dry to moist; loam

Laval host: mainly moths

Note: attracts woodland songbirds





Solidago nemoralis gray goldenrod

Height: 2.5 to 3.5'

Blooms: August to November; yellow

Light: full sun to part shade

Soil: dry; loam

Note: well-behaved clump-former





Solidago odora
sweet goldenrod

Height: 2 to 5'

Blooms: July to October; yellow

Light: full sun to part shade

Soil: dry to moist; loam, sand, clay

Note: late season nectar source





Solidago sempervirens
seaside goldenrod

Height: 4 to 6'

Blooms: August to October; yellow

Light: full sun to part shade

Soil: moist; sand, clay

Note: late season nectar source





Sorghastrum nutans

Indiangrass

Height: 5 to 6'

Blooms: July and August; brown

Light: full sun

Soil: dry to moist; sandy-loam

Host to: salt and pepper skipper

Note: alternative to *Miscanthus*





Strophostyles umbellata
pink fuzzybean

Height: vining to 10'

Blooms: July to Sept; pink/peach

Light: full sun to part shade

Soil: dry to moist; sandy

Note: edible





Symphotrichum ericoides
white heath aster

Height: 1.5 to 3'

Blooms: August to Nov; white/yellow

Light: full sun to part shade

Soil: dry to moist; sandy

Note: spreads by rhizomes





Symphyotrichum laeve
smooth blue aster

Height: 1 to 4'

Blooms: August to October; lilac/yellow

Light: full sun to part shade

Soil: dry; loamy-clay

Note: trim to keep low





*Symphiotrichum
novae-angliae*

New England aster

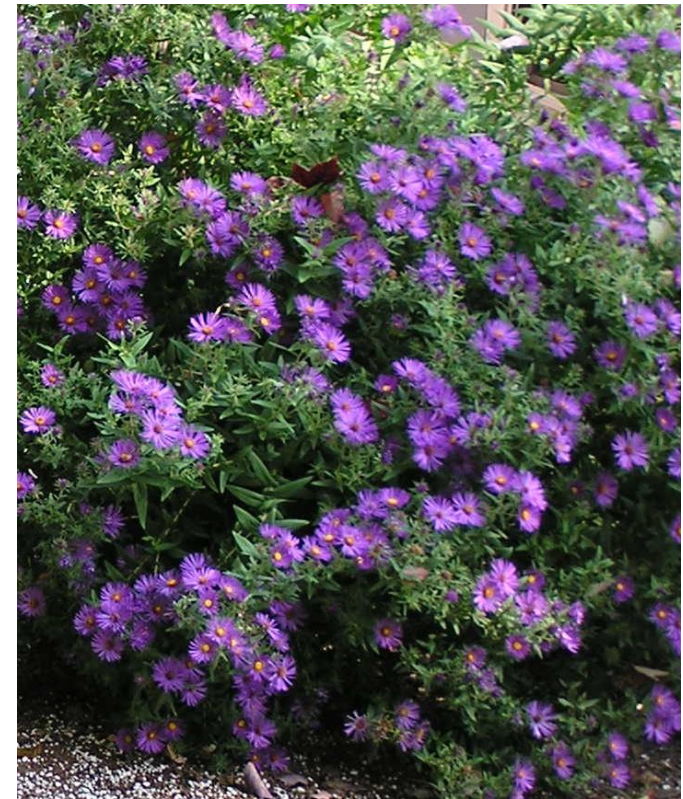
Height: 3 to 4 '

Blooms: August to October; lilac/yellow

Light: full sun to part shade

Soil: moist to average; clay to loam

**Notes: raingardens, enjoyed by deer;
trim to keep low**





Symphotrichum
oblongifolium
aromatic aster

Height: 1 to 2 '

Blooms: Sept and Oct; lilac/yellow

Light: full sun

Soil: dry to moist; gravelly loam

Host to: silver checkerspot

Note: slopes and rockgardens





Symphotrichum puniceum
purplestem aster

Height: 2 to 8'

Blooms: August to November; lilac

Light: full sun to part shade

Soil: moist to wet; loam

Note:





Tiarella cordifolia
heartleaf foamflower

Height: 0.5 to 1'

Blooms: May and June; white/pink

Light: part sun to full shade

Soil: moist; loam with rich humus

Note: attractive groundcover





Trichostema dichotomum
forked bluecurls

Height: 0.5 to 1'

Blooms: August and September; blue

Light: full sun to part shade

Soil: dry to moist; sandy

Host to: butterfly

Note: an annual





Vernonia noveboracensis New York ironweed

Height: 3 to 8'

Blooms: August to October; purple

Light: full sun to part sun

Soil: moist to wet; loam

**Notes: can be trimmed to keep low;
raingardens**





Veronicastrum virginicum

Culver's root

Height: 3 to 5'

Blooms: June to September; white

Light: full sun to part shade

Soil: moist to wet; loamy-clay

Note: white spires of flowers





Zizia aurea
golden Alexanders

Height: 1.5 to 2.5'

Blooms: April to June; yellow

Light: full sun to full shade

Soil: dry to moist; silty-loam

Note: purple leaves and fruit in Fall





Athyrium filix-femina Common ladyfern

Height: 6" to 2'

Sori: round with triangular indusia

Light: part sun to full shade

Soil: moist; humus, loam

Notes: riparian habitats, deciduous





Polystichum acrostichoides

Christmas fern

Height: 6" to 2'

Sporangia: April to June; brown

Light: full shade

Soil: dry to moist; silty-loam

Note: sori on upper part of fronds





Thelypteris noveboracensis

New York fern

Height: 1 to 2'

Sori: round with peltate indusia

Light: part sun to full shade

Soil: moist; humus, loam

**Note: frond tapering at base,
deciduous**



LEGEND TO SYMBOLS



FULL SUN



**PART SUN/
PART SHADE**



FULL SHADE



RAINGARDEN



DEER RESISTANT



POLLINATORS



BUTTERFLY NECTAR



BIRD FOOD

Native Plant PRICES

(Prices include 6% sales tax)

Plugs - \$2

4.5" pots - \$6

Quarts – \$8

Gallons - \$12

**Please make check payable to
Chesapeake Natives**



template template

2013 Sept 4

Height: 2 to 3'

Blooms: August to November; white

Light: full sun – to part shade

Soil: dry to moist; sandy

Host to:



PG

